

# St. Andrews Scots School

Adjacent Navniti Apartment ,Patparganj, Delhi-110092

Session: 2025-2026

Class: III

Subject: Science

## Lesson -4 Eating Habits of Animals

- Reading of the chapter
- Explanation (will be done in class)

### (Textbook Exercises)

#### A. Tick the correct answer

- 1) (b) Sheep
- 2) (c) Rabbit
- 3) (b) Cat
- 4) (c) Plant

#### B. Fill in the blanks.

- 1) Suck
- 2) Snake , frog
- 3) Mosquito
- 4) Pets

#### C. Name them .

- 1) Earthworm
- 2) Cow
- 3) Shark
- 4) Plants

#### D. Write whether the following statements are True or False.



- 1.False
- 2.True
- 3.False
- 4.True

### (Notebook Work)

#### New Words

- 1) Swallowing
- 2) Grabbing
- 3) Muscles
- 4) Pointed
- 5) Curved
- 6) Gnaw
- 7) Chewing
- 8) Sucking
- 9) Lapping
- 10) Nectar

#### Define

- 1) Grabbing – Grasp suddenly and roughly.
- 2) Gnawing – Biting or chewing food repeatedly.
- 3) Nectar - A sweet juice of flowers.
- 4) Swallowing – To make the food go down the throat.



### Fill in the blanks

1. Butterflies suck nectar from flowers.
2. Snake and frog can swallow their food whole.
3. A mosquito sucks blood.
4. Pets live with us.

### Short Answer questions

1. Why do animals need food ?

Ans. To get energy and to grow.

2. Name two animals that take liquid food.

Ans. Cats and dogs.

3. What is chewing the cud?

Ans. Animals that swallow the food and later bring it back to mouth and chew it slowly.

This is called chewing the cud.

4. What kind of teeth do carnivores have?

Ans. They have sharp, pointed and curved teeth.

5. How do butterflies and mosquitoes obtain their food ?

Ans. They obtain their food with the help of long, thin feeding tube.

### Long answer questions

1. How does a snake and a lion eat its food?

Ans. Snake swallows the whole food with its powerful muscles. Lion has sharp, pointed and curved front teeth to tear flesh.

2. What is food chain? Make a food chain with deer, plant and tiger.



Ans. A chain of living things in which herbivores eat plants and themselves are eaten by carnivores is called a food chain.

Plants ----Deer----Tiger.

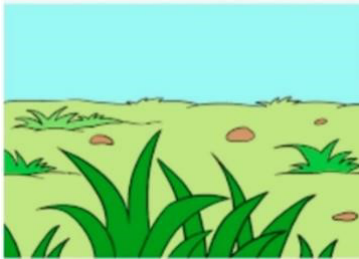
3. It is our duty to feed domestic animals. Why?

Ans. We should feed domestic animals because -:

- a) They give us many useful things and help us in our work.
- b) They depend on us for food.

### Diagrams

Draw diagrams of two food that herbivores eat.



**Grass.**



**Grains**

### Activity

Paste the picture of any **Two Food Chain** in your science notebook.

Eg. Grass-> Deer -> Lion

Grains -> Rat -> Snake -> Eagle





Edit with WPS Office